

GABBIETTE PER SERIE STERZO

CACHES A BILLES POUR JEUX DE DIRECTION  
STEERING SETS BALL CAGES

Art. 3919

**SUPERIORE** per/pour/for **PEUGEOT TWEET  
-KYMCO -SYM** (Art. 6046 pag. 31)

Con 14 sfere da 5/32 x Ø 36,5  
Avec 14 billes de 5/32 x Ø 36,5  
With 14 5/32 balls and Ø 36,5  
Conf. / Pack 5 pcs

Art. 3922

**INFERIORE** per/pour/for **PEUGEOT TWEET  
KYMCO - SYM** (Art. 6046 pag. 31)

Con 15 sfere da 1/4 x Ø 43,5  
Avec 15 billes de 1/4 x Ø 43,5  
With 15 1/4 balls and Ø 43,5  
Conf. / Pack 5 pcs

Art. 3921

**SUPERIORE** per/pour/for **PIAGGIO** (art. 6076 pag. 33)  
(O.R. 77024)

Con 24 sfere da 1/8 x Ø 40  
Avec 24 billes (cache à bille supérieure) de 1/8 x Ø 40  
With 24 1/8 balls (Upper ball cage) and Ø 40  
Conf. / Pack 5 pcs

Art. 3923

**INFERIORE** per/pour/for **PIAGGIO** (art. 6076 pag. 33)  
(O.R. 77023)  
**PIAGGIO BEVERLY 250/300 - GILERA  
NEXUS** (Art. 6078 pag. 33)

Con 17 sfere da 1/4 x Ø 53  
Avec 17 billes (cache à bille inférieure) de 1/4 x Ø 53  
With 17 1/4 balls (Lower ball cage) and Ø 53  
Conf. / Pack 5 pcs

Art. 3926

**SUPERIORE** per/pour/for **KYMCO-HONDA**  
(Art. 6037 pag. 30)

Con 14 sfere da 9/32 x Ø 42  
Avec 14 billes de 9/32 x Ø 42  
With 14 9/32 balls and Ø 42  
Conf. / Pack 5 pcs

Art. 3929

**INFERIORE** per/pour/for **KYMCO - HONDA**  
(Art. 6037 pag. 30)

Con 18 sfere da 9/32 x Ø 51  
Avec 18 billes de 9/32 x Ø 51  
With 18 9/32 balls and Ø 51  
Conf. / Pack 5 pcs

FORCELLE - FOURCHES - FORKS



Tipo - type APRILIA Tipo - type PAIOLI Tipo - type PIAGGIO

APRILIA

Art. 1920

**SCARABEO 50** prod. dal/de/from '95  
(O.R. 803705 - 8203545 - mod. STREET - 8203933 mod.CITY)

Forcella telescopica

YAMAHA - MBK

High Performance Fork by PAIOLI

Art. 9392

**MBK OVETTO 50 - YAMAHA NEO'S 50**  
prod. dal/de/from '02

Forcella teleidraulica - DISCO FRENO Ø 190  
Fourche téléhydraulique - FREIN A DISQUE Ø 190  
Teledraulic fork - DISK BRAKE Ø 190

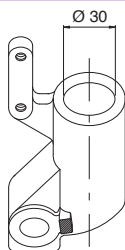
Art. 9430

**BOOSTER NG** prod. '95/98  
(O.R. 4TD F 31000-100)

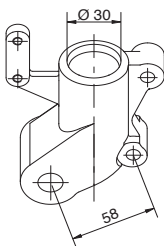
Forcella teleidraulica con DISCO FRENO Ø 180  
Fourche téléhydraulique avec FREIN A DISQUE Ø 180  
Teledraulic fork with DISK BRAKE Ø 180

**PIAGGIO - GILERA**
**FORCELLE PER SCOOTER PIAGGIO CON AMMORTIZZATORE IDRAULICO**
**FOURCHES POUR SCOOTER PIAGGIO AVEC AMORTISSEUR HYDRAULIQUE**
**FORKS FOR PIAGGIO SCOOTER WITH HYDRAULIC SHOCK ABSORBER**
**Art. 2119**
**RUNNER 50 dal/de/from '00 (O.R. 597493-600858)**

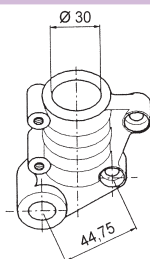
Forcella telescopica – Disegno del piede  
 Fourche télescopique – Dessin du pied  
 Telescopic fork – Foot drawing


**Art. 2116**
**RUNNER 50 SP dal/de/from 2005 (O.R. 94904R)**

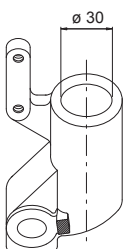
Forcella telescopica – Disegno del piede  
 Fourche télescopique – Dessin du pied  
 Telescopic fork – Foot drawing


**Art. 2120**
**TYPHOON-NTT (O.R.564921-56068/R-597213)**

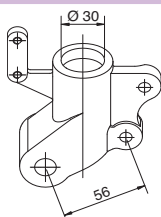
Forcella telescopica – Disegno del piede  
 Fourche télescopique – Dessin du pied  
 Telescopic fork – Foot drawing


**Art. 2127**
**NRG EXTREME - MC3 PURE JET dal/de/from '01 (O.R. 597669-56160R)**

Forcella telescopica – Disegno del piede  
 Fourche télescopique – Dessin du pied  
 Telescopic fork – Foot drawing


**Art. 2128**
**NRG POWER (O.R. 95930R)**

Forcella telescopica – Disegno del piede  
 Fourche télescopique – Dessin du pied  
 Telescopic fork – Foot drawing


**AMMORTIZZATORI PER FORCELLE**
**AMORTISSEUR pour fourches SHOCK ABSORBER for front forks**

**Art. 1940**
**SCARABEO 50 2t -4t**

tutti i modelli / tous les modèles / all models  
 (O.R. 820 37 16 820 38 88)

**MADE IN ITALY**
**Art. 2137**
**PIAGGIO - GILERA SCOOTER 50cc**

(O.R. 561928) e nostre forcelle / et nos fourches / and our forks

**Art. 5091**
**SPURGATORE DELL'OLIO DEL SISTEMA FRENANTE ISTRUZIONI CON IL KIT**
**PURGEUR D' HUILE DU CIRCUITS DE FREINAGE MODE D'EMPLOI CONTENU DANS LA CONFECTION**
**BRAKE OIL BLEEDING DEVICE USER INSTRUCTION INSIDE THE PACKAGING**

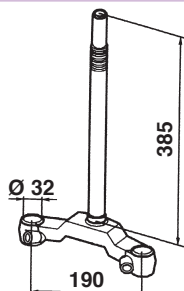
**Art. 5092**
**MISURATORE LIVELLO OLIO DELLE FORCELLE PER CONTROLLARE E RIPRISTINARE IL LIVELLO. UTILE PER LA RICARICA DELL'ESATTA QUANTITA' NECESSARIA. ISTRUZIONI CON IL KIT.**
**MESUREUR NIVEAU DE L'HUILE DES FOURCHES POUR CONTROLER ET RETABLIR LE NIVEAU. UTILE POUR LA RECHARGE DE L'EXACTE QUANTITE NECESSAIRE. MODE D'EMPLOI CONTENU DANS LA CONFECTION.**
**FORK OIL LEVEL GAUGE TO CHECK AND GAUGE THE LEVEL. USEFUL TO REFILL THE CORRECT QUANTITY. USER INSTRUCTION INSIDE THE PACKAGING.**


TESTE DI FORCELLA  
TES DE FOURCHES  
FORK HEAD

Art. 1982

**MALAGUTI F12/F15**

(steli / tiges / stems  $\varnothing$  32)  
(O.R. 12030199)



Per / pour / for

**MALAGUTI F12R 50 2t**

prod. dal/de/from '07

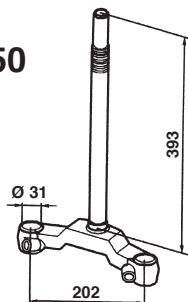
(O.R. 120.558.00) vedi / voir / see Art. 9436

Art. 9360

**KYMCO AGILITY 50/125/150**

RUOTA / ROUE / WHEEL **12"**

(steli / tiges / stems  $\varnothing$  30)  
(O.R. 53200-LDC8-E10)

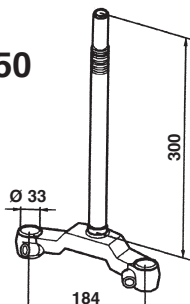


Art. 9362

**KYMCO AGILITY 50/125/150**

RUOTA / ROUE / WHEEL **16"**

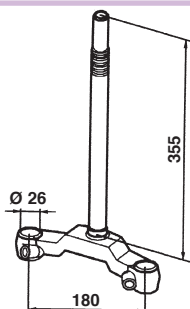
(steli / tiges / stems  $\varnothing$  30)  
(O.R. 53200-LFC2-E10)



Art. 9410

**YAMAHA JOG 50**

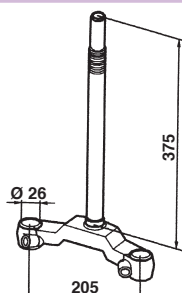
(steli/tiges/stems  $\varnothing$  26)  
(O.R. 5RW-F3340-00)



Art. 9415

**MBK-OVETTO  
YAMAHA NEO'S**

Tutti i modelli / tous les modèles / all models  
(steli / tiges / stems  $\varnothing$  26)  
(O.R. 5RN F 3340-01)



Art. 9432

**MBK BOOSTER NG  
YAMAHA BW'S NG**

Fino / jusqu'à / till '03

(steli / tiges / stems  $\varnothing$  30)

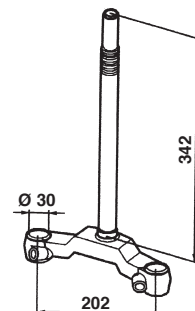
**TRACK NITRO-AEROX**

Fino / jusqu'à / till '01

(O.R. 4SB-F3340

5BR - F3340 / 4YB-F3340

5PE - F3340 )



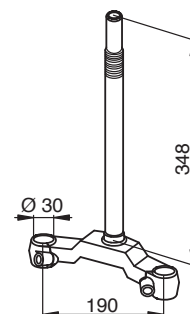
Art. 9434

**MBK BOOSTER  
BOOSTER NG 50  
YAMAHA BW'S R  
ORIGINAL - BW'S NG 50**

prod. dal/de/from 2004

(Steli/tiges/stems  $\varnothing$  30)

(O.R. 5WWF - 33 - 40)



Art. 9436

**MBK NITRO - dal/de/from '02**

**YAMAHA AEROX - dal/de/from '02**

(steli / tiges / stems  $\varnothing$  30)

(O.R. 5 MEF 3340 1000

per forcella / pour fourche / for fork PAIOLI)

(O.R. 5 MEF 3340 3000

per forcella / pour fourche / for fork KAIFA)

VALIDO PER MODELLI

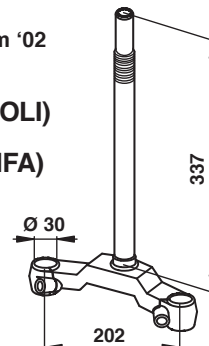
RUOTE 12" E 13"

VALABLE POUR MODÈLES

ROUES 12" ET 13"

AVAILABLE FOR MODELS

WHEELS 12" AND 13"



anche per/ aussi pour/also for:

**MALAGUTI F12R 50cc 2t** prod. dal/de/from '07

(O.R. 120.558.00)

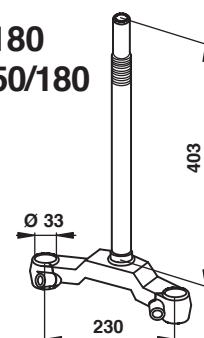
Art. 9440

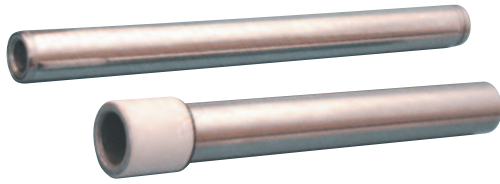
**MBK SKYLINER 125/150/180  
YAMAHA MAJESTY 125/150/180**

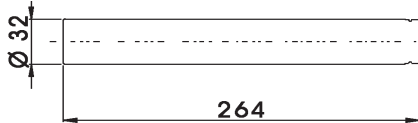
(steli / tiges / stems  $\varnothing$  33)

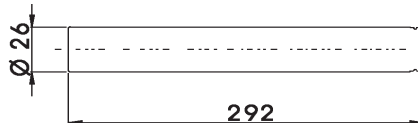
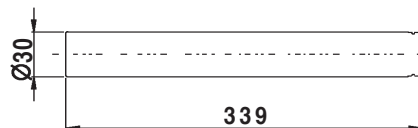
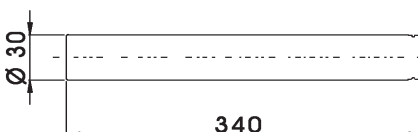
(O.R. 5DSW33401033

5DSF33402000)



**COPPIA STELI FORCELLA  
PAIRE DE TIGES DE FOURCHE  
COUPLE OF FORK STEMS**

**Art. 5832**
**MALAGUTI F12**

 tutti i modelli / tous les modèles / all models  
 per / pour / for prod. PAIOLI tipo con doppio pompante  
 dal / de / from '96  
 (SX / DX O.R. 12 030 200)

**Art. 5960**
**MBK OVETTO - YAMAHA NEO'S  
YAMAHA JOG 50**

 per / pour / for prod. PAIOLI  
 (SX / DX O.R. 5AD-F3110)

**Art. 5982**
**YAMAHA BW'S R - NG dal/de/from 2005**
**YAMAHA AEROX 50 prod. dal/de/from 2010**
**RUOTA / ROUE / WHEEL 13"**
**FORCELLA / FOURCHE / FORK KAIFA**  
 (O.R. 5ME - F3110 - 30)

**Art. 5984**
**MBK BOOSTER NG-YAMAHA BW'S NG  
TRACK - NITRO - AEROX - SPY**
**FORCELLA / FOURCHE / FORK PAIOLI**  
 (SX / DX O.R. 5FX-F3110) (5BR-F3110-100)

**MALAGUTI F12R 50cc 2t prod. dal/de/from 2007**  
 (SX / DX O.R. 120 563 00)

**YAMAHA AEROX 50 prod. dal/de/from 2010**
**RUOTA / ROUE / WHEEL 13"**
**COPPIA TERMINALI IN ACCIAIO  
PAIRE EMBOUTS EN ACIER  
COUPLE OF STEEL ENDS**
**Art. 8449**

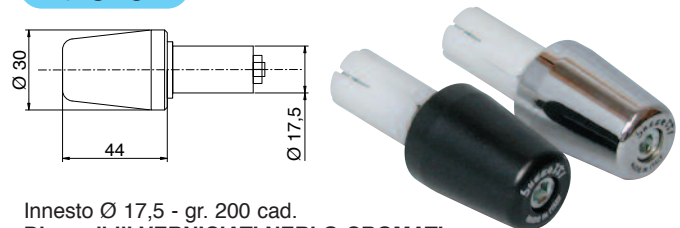

Innesto Ø 17,5 - gr. 330 cad.

**Disponibili VERNICIATI NERI O CROMATI**

Fixation Ø 17,5 - gr. 330 chaque

**Disponibles VERNIS NOIR OU CHROMATE**

Insert of Ø 17,5 - gr. 330 each

**Available BLACK VARNISHED OR CHROMIUM**
**Art. 8451**


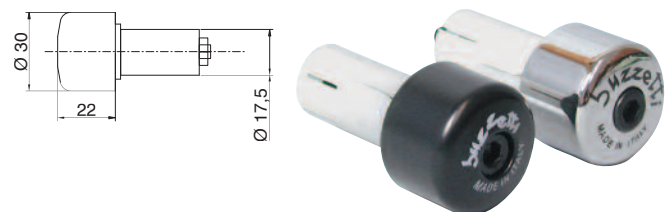
Innesto Ø 17,5 - gr. 200 cad.

**Disponibili VERNICIATI NERI O CROMATI**

Fixation Ø 17,5 - gr. 200 chaque

**Disponibles VERNIS NOIR OU CHROMATE**

Insert of Ø 17,5 - gr. 200 each

**Available BLACK VARNISHED OR CHROMIUM**
**Art. 8461**

**SCOOTER - CICLOMOTORI / CYCLOMOTEURS  
/ MOPEDS 50cc**

Innesto Ø 17,5 - gr. 120 cad.

**Disponibili VERNICIATI NERI O CROMATI**

Fixation Ø 17,5 - gr. 120 chaque

**Disponibles VERNIS NOIR OU CHROMATE**

Insert of Ø 17,5 - gr. 120 each

**Available BLACK VARNISHED OR CHROMIUM**